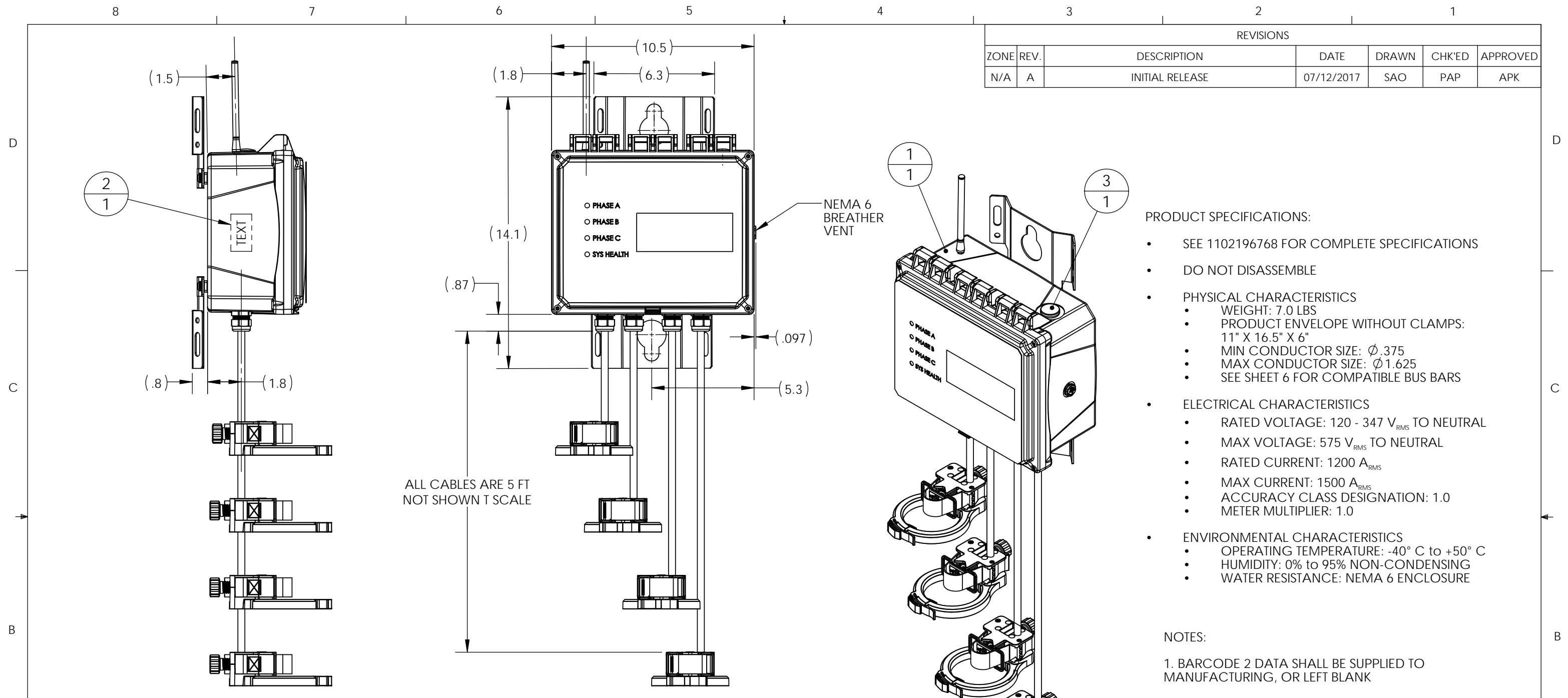


REVISIONS						
ZONE	REV.	DESCRIPTION	DATE	DRAWN	CHK'ED	APPROVED
N/A	A	INITIAL RELEASE	07/12/2017	SAO	PAP	APK

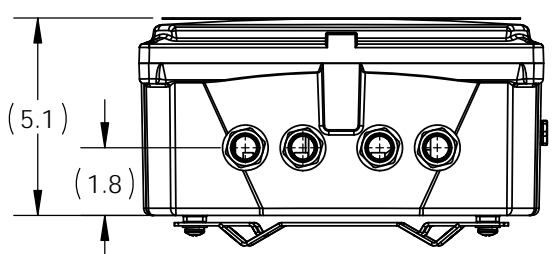


- PRODUCT SPECIFICATIONS:
- SEE 1102196768 FOR COMPLETE SPECIFICATIONS
 - DO NOT DISASSEMBLE
 - PHYSICAL CHARACTERISTICS
 - WEIGHT: 7.0 LBS
 - PRODUCT ENVELOPE WITHOUT CLAMPS: 11" X 16.5" X 6"
 - MIN CONDUCTOR SIZE: ϕ .375
 - MAX CONDUCTOR SIZE: ϕ 1.625
 - SEE SHEET 6 FOR COMPATIBLE BUS BARS
 - ELECTRICAL CHARACTERISTICS
 - RATED VOLTAGE: 120 - 347 V_{RMS} TO NEUTRAL
 - MAX VOLTAGE: 575 V_{RMS} TO NEUTRAL
 - RATED CURRENT: 1200 A_{RMS}
 - MAX CURRENT: 1500 A_{RMS}
 - ACCURACY CLASS DESIGNATION: 1.0
 - METER MULTIPLIER: 1.0
 - ENVIRONMENTAL CHARACTERISTICS
 - OPERATING TEMPERATURE: -40° C to +50° C
 - HUMIDITY: 0% to 95% NON-CONDENSING
 - WATER RESISTANCE: NEMA 6 ENCLOSURE

- NOTES:
- BARCODE 2 DATA SHALL BE SUPPLIED TO MANUFACTURING, OR LEFT BLANK
 - EUI64 FIELD IS INTENTIONALLY LEFT BLANK FOR SECURITY REASONS. ADDRESS ON FILE PER WORK ORDER.

LABEL CONFIGURATION TABLE
(SEE 1102192348)

LABEL FIELD	VALUE
<PART NUMBER>	PRD-1102192015
<TITLE>	LVSS, 3 PHASE, OVERHEAD
<BARCODE 1/ SERIAL NUMBER>	XXXXXXXXXXXX
<BARCODE 2>	<REFER TO NOTE 1>
<SPEC LINE 1>	120-347 V 0-1200 A 3PH 4 WIRE
<SPEC LINE 2>	Accuracy Class: 1.0 Multiplier: 1
<SPEC LINE 3>	CONTAINS FCC ID: R17LN930
<SPEC LINE 4>	CONTAINS IC: 5131A-LN930
<SPEC LINE 5>	CONTAINS FCC ID: TFB-TIW1-01
<SPEC LINE 6>	CONTAINS IC: 5969A-TIW101
<EUI64 ADDRESS>	<REFER TO NOTE 2>

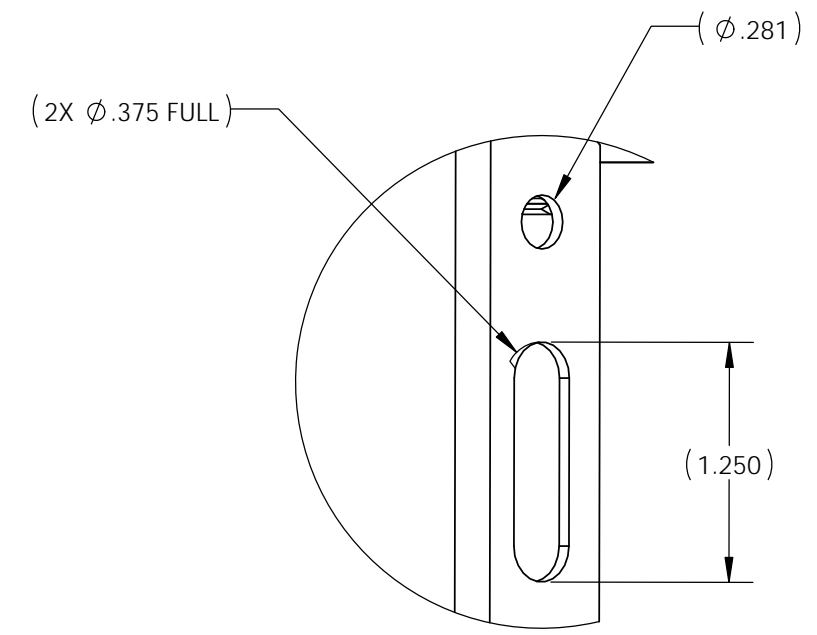
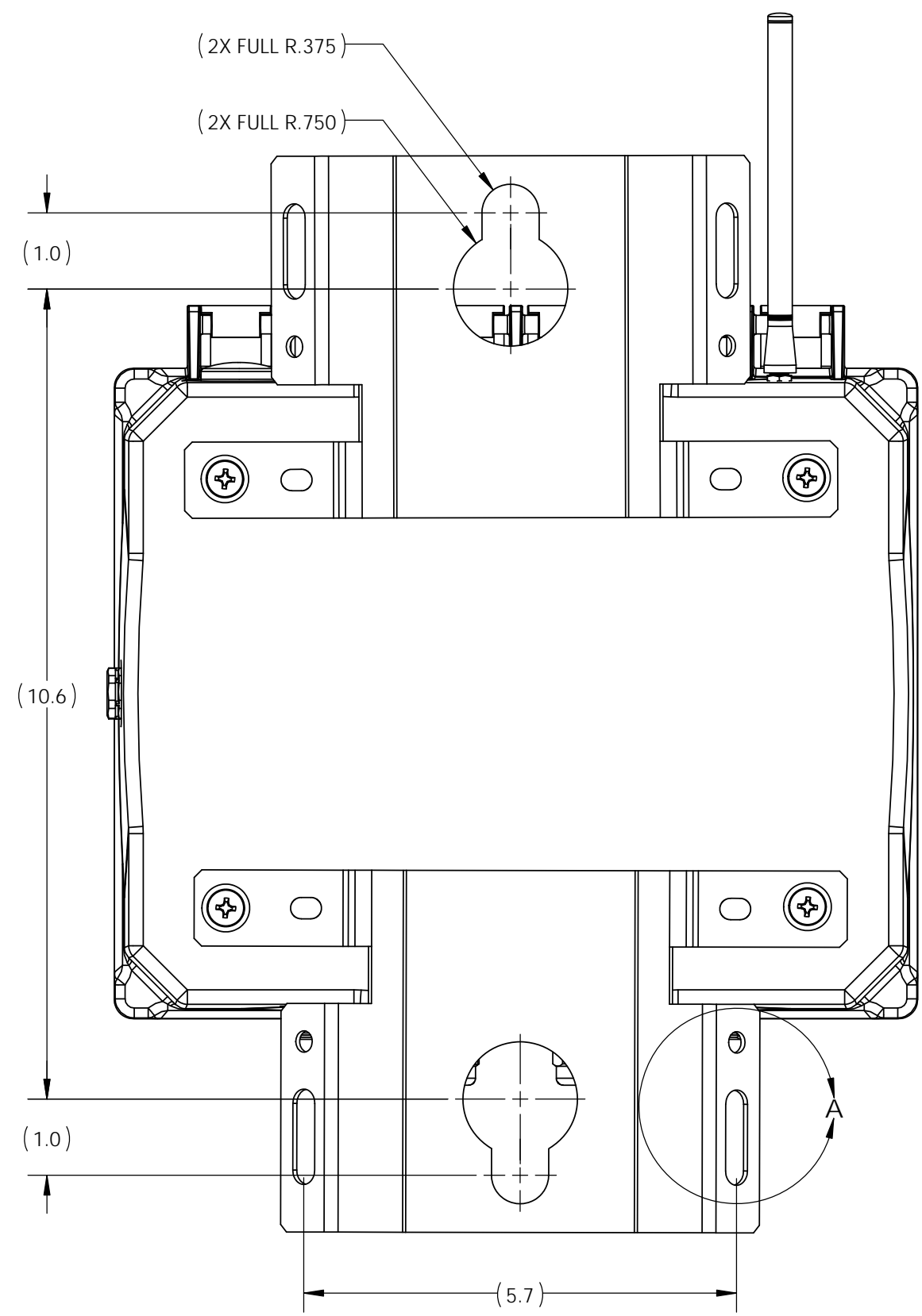


THIRD ANGLE PROJECTION	INTERPRET DRAWINGS IN ACCORDANCE WITH ASME Y14.5M-1994
UNLESS OTHERWISE SPECIFIED DIMENSIONS ARE IN INCHES.	UNLESS OTHERWISE SPECIFIED: -BREAK EDGES .005-.015 -REMOVE BURRS -DIMENSIONS APPLY AFTER FINISH -ALL THREADS ARE CLASS 2
TOLERANCES ARE: DECIMALS ANGLES .X ± N/A ± N/A .XX ± N/A FRACTIONS .XXX ± N/A ± N/A	MATERIAL: SEE BOM HEAT TREATMENT: N/A FINISH: N/A
DO NOT SCALE DRAWING	
SURFACE FINISH: N/A	


CO7 TECHNOLOGIES PROPRIETARY INFORMATION					
DRAWN	SAO	07/12/2017		Foster-Miller, Inc dba CO7 TECHNOLOGIES	
CHECKED	PAP	07/12/2017		PRODUCT, LVSS, 3 PHASE, OVERHEAD	
APPROVED	APK	07/12/2017		SIZE B	CAGE 30233
APPLICATION			PRD-1102192015		
NEXT ASSY:	N/A		SCALE: 1:5	WEIGHT: 7.0 LBS	SHEET: 1 OF 6
FINAL ASSY:	N/A				
MACHINE:	LVSS				
PROJECT:	IRD-110219				

8 7 6 5 4 3 2 1

D
C
B
A

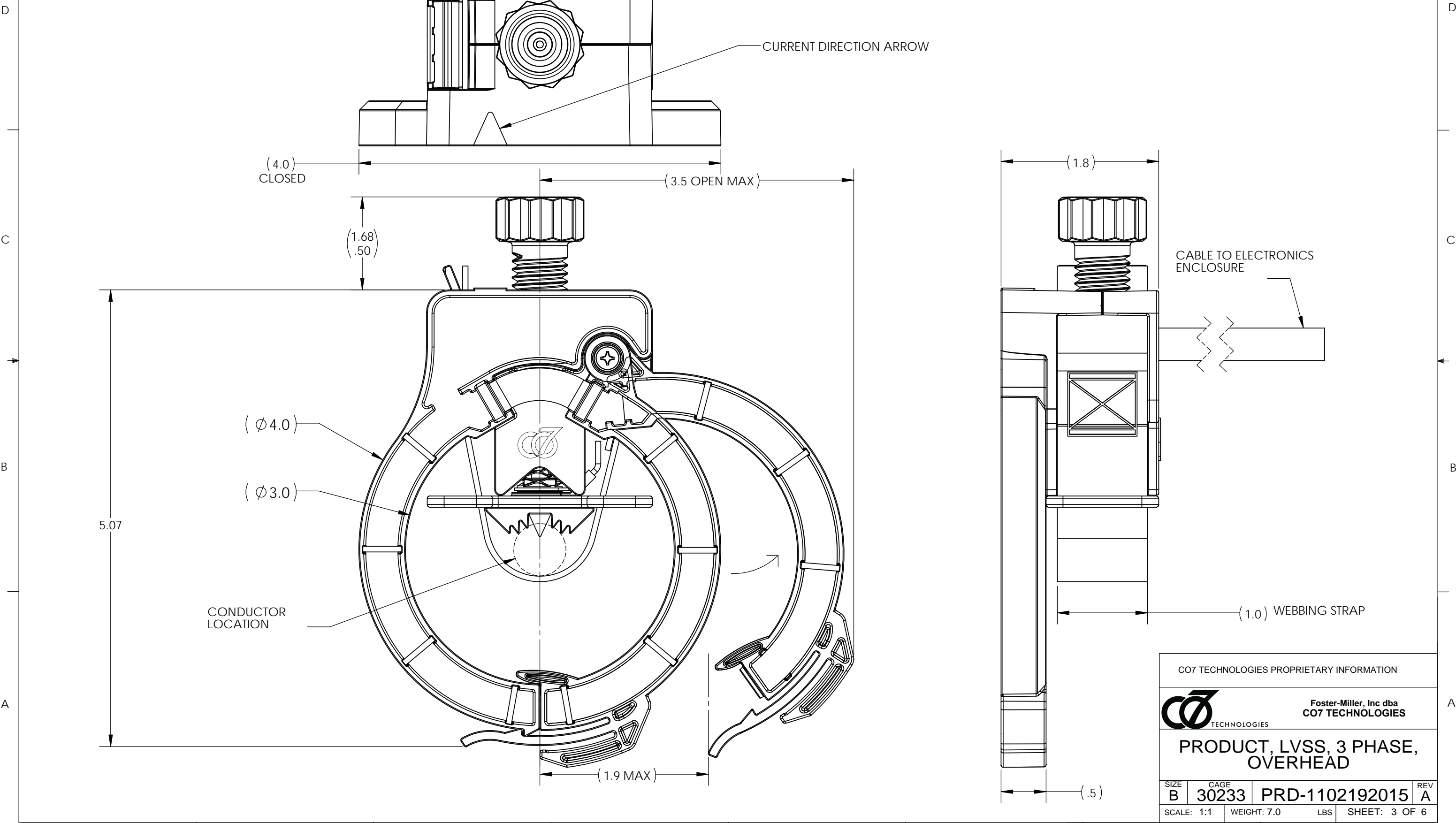


DETAIL A
SCALE 1 : 1
NOT TRUE PROJECTION
4 PLACES

CO7 TECHNOLOGIES PROPRIETARY INFORMATION			
		Foster-Miller, Inc dba CO7 TECHNOLOGIES	
PRODUCT, LVSS, 3 PHASE, OVERHEAD			
SIZE B	CAGE 30233	PRD-1102192015	REV A
SCALE: 1:2	WEIGHT: 7.0	LBS	SHEET: 2 OF 6

8 7 6 5 4 3 2 1

CLAMP DIMENSIONS



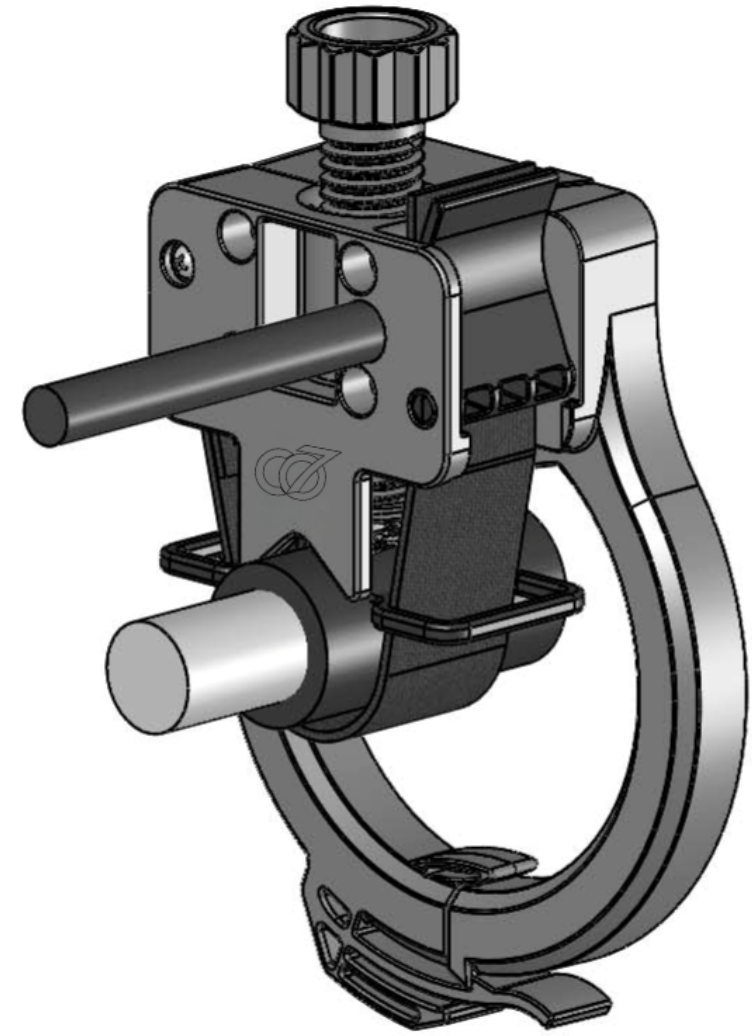
CO7 TECHNOLOGIES PROPRIETARY INFORMATION


TECHNOLOGIES Foster-Miller, Inc dba
CO7 TECHNOLOGIES

**PRODUCT, LVSS, 3 PHASE,
OVERHEAD**

SIZE B	CAGE 30233	PRD-1102192015	REV A
SCALE: 1:1	WEIGHT: 7.0	LBS	SHEET: 3 OF 6

INSTALLATION EXAMPLE



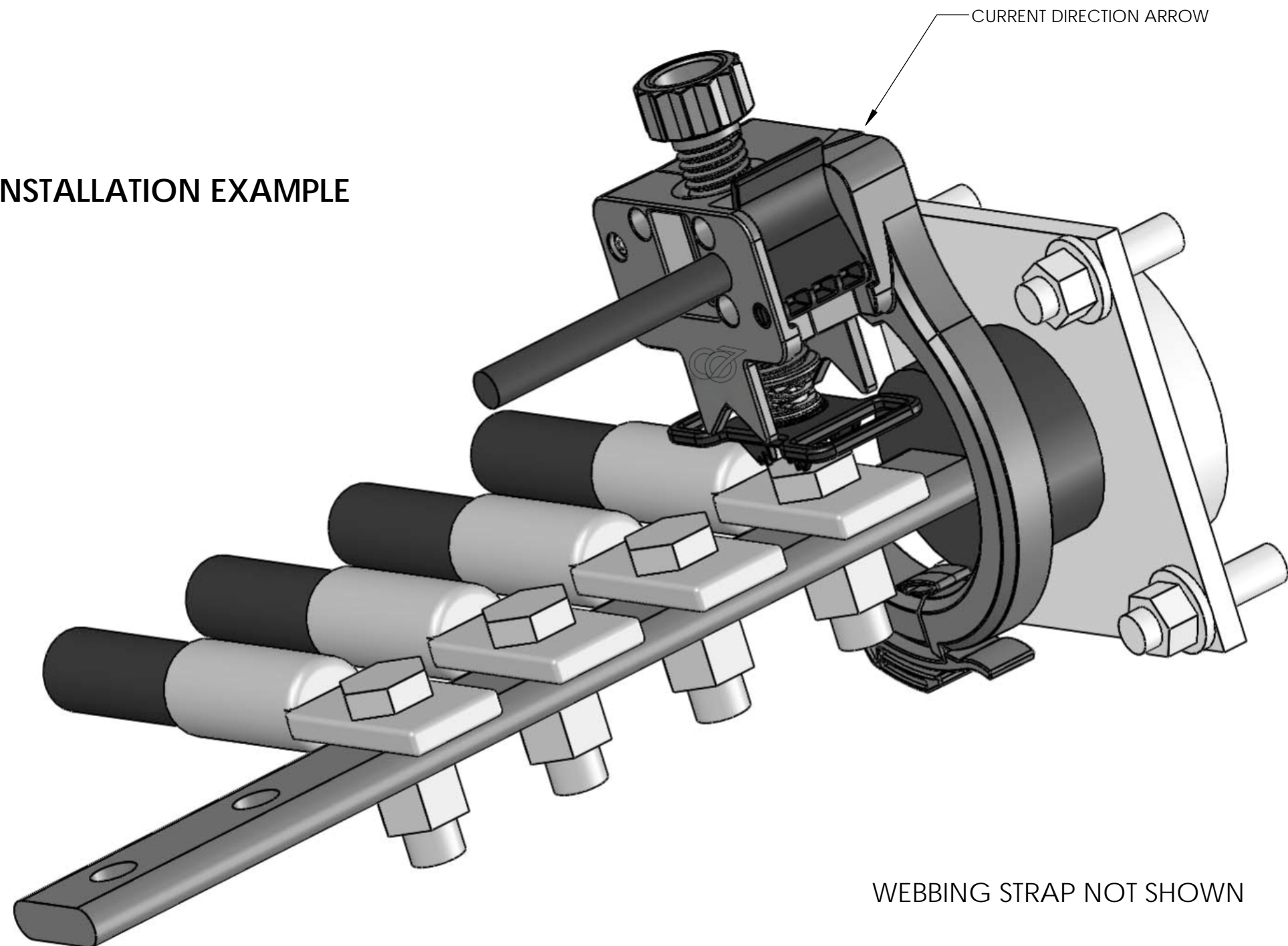
CO7 TECHNOLOGIES PROPRIETARY INFORMATION			
		Foster-Miller, Inc dba CO7 TECHNOLOGIES	
PRODUCT, LVSS, 3 PHASE, OVERHEAD			
SIZE B	CAGE 30233	PRD-1102192015	REV A
SCALE: 1:1	WEIGHT: 7.0	LBS	SHEET: 4 OF 6

8 7 6 5 4 3 2 1

D

D

INSTALLATION EXAMPLE



CURRENT DIRECTION ARROW

C

C


B

B

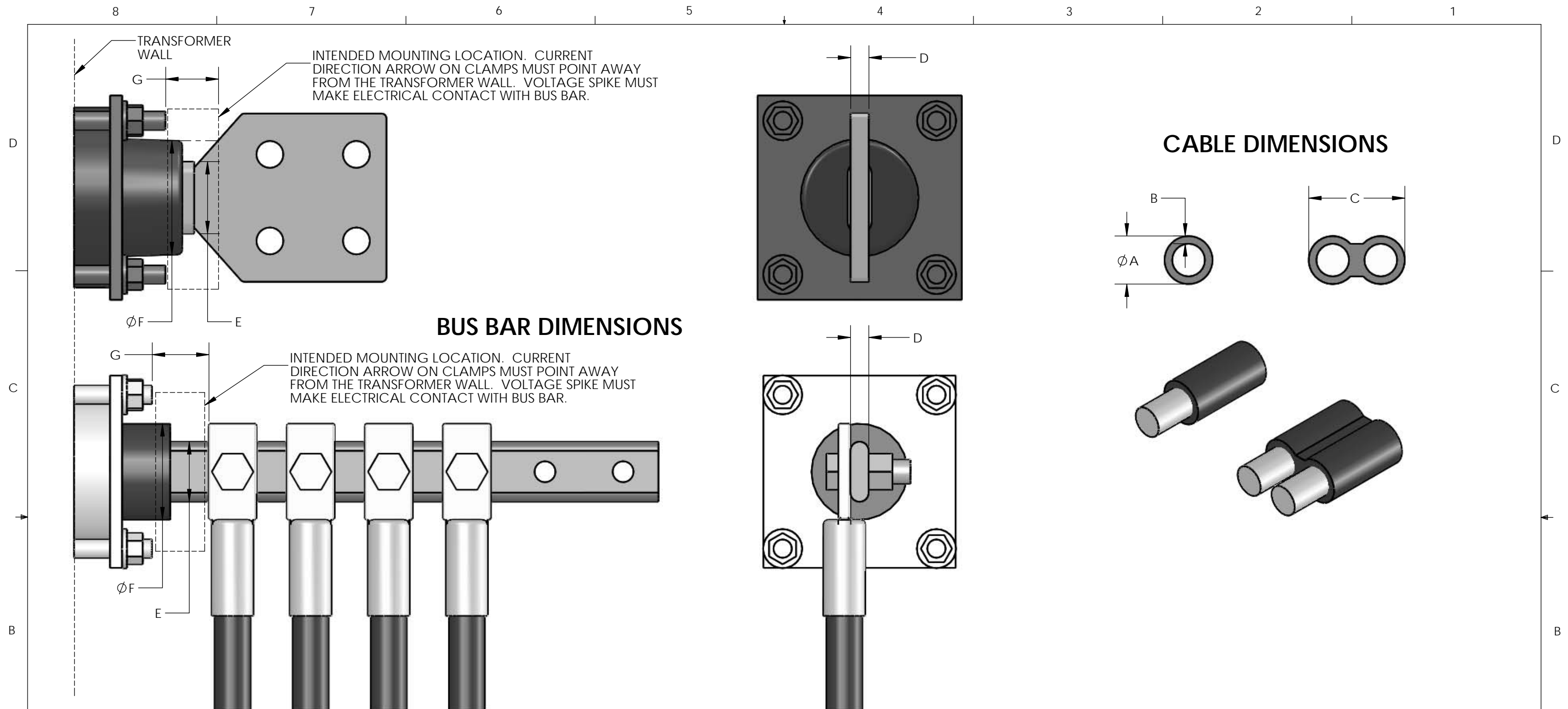
WEBBING STRAP NOT SHOWN

A

A

CO7 TECHNOLOGIES PROPRIETARY INFORMATION			
		Foster-Miller, Inc dba CO7 TECHNOLOGIES	
PRODUCT, LVSS, 3 PHASE, OVERHEAD			
SIZE B	CAGE 30233	PRD-1102192015	REV A
SCALE: 1:1	WEIGHT: 7.0	LBS	SHEET: 5 OF 6

8 7 6 5 4 3 2 1



ACCEPTABLE MOUNTING LOCATION DIMENSIONS (INCHES)				
	LABEL	DESCRIPTION	MIN	MAX
CABLES:	A	OUTER DIAMETER	.375	1.625
	B	INSULATION THICKNESS	-	.160
	C	WIDTH OF TWO CONDUCTOR WIRE	-	2.000
BUS BARS:	D	BUS BAR THICKNESS	.250	.75
	E	BUS BAR WIDTH AT NECK	-	2.000
	F	BUSHING DIAMETER	-	2.750
	G	CLEARANCE BETWEEN MOUNTING BOLTS AND FIRST CONDUCTOR	.500	-

CO7 TECHNOLOGIES PROPRIETARY INFORMATION

Foster-Miller, Inc dba
CO7 TECHNOLOGIES

PRODUCT, LVSS, 3 PHASE, OVERHEAD

SIZE B	CAGE 30233	PRD-1102192015	REV A
------------------	----------------------	-----------------------	-----------------

SCALE: 1:2 WEIGHT: 7.0 LBS SHEET: 6 OF 6